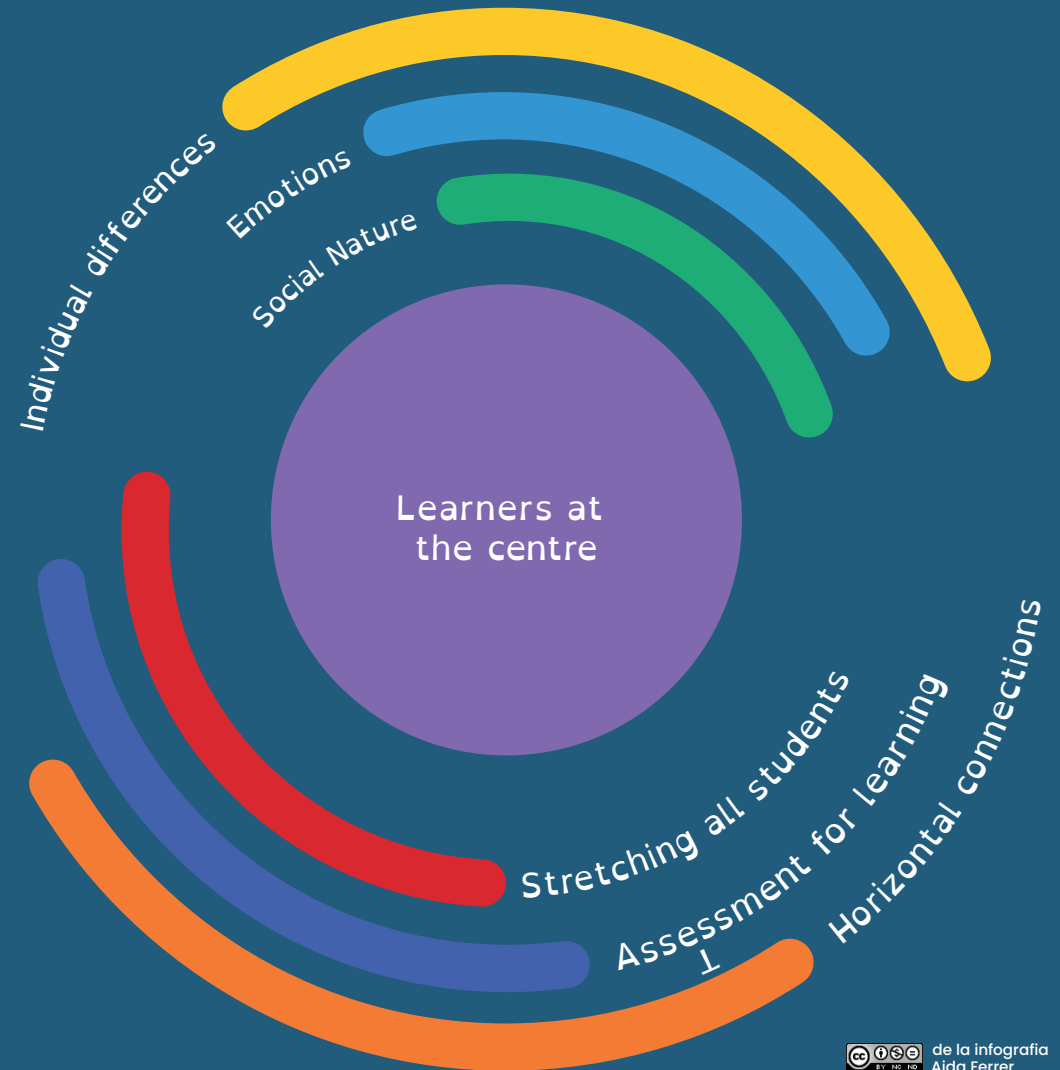


7 Principles of Learning

Source: *The Nature of Learning. Using Research to Inspire Practice.* OECD, 2012

- 1 Learners at the centre
- 2 Learning has a social nature
- 3 Emotions are integral to learning
- 4 Individual differences among learners must be recognized
- 5 Stretching all students without overload
- 6 Assessment for learning
- 7 Learning promotes building horizontal connections



7 Principles of Learning

Source: *The Nature of Learning. Using Research to Inspire Practice.* OECD, 2012

“The force and relevance of these learning principles do not reside in each one taken in isolation -they are not a menu from which to “cherry pick” some favourites while ignoring the rest. They add up to a demanding framework as the OECD proposes that all of them should inform practice and design, whether in schools or in wider settings and systems.” OECD (2017), *The OECD Handbook for Innovative Learning Environments*, Educational Research and Innovation, OECD Publishing, Paris.

1 Learners at the centre

The learning environment recognises the learners as its core participants, encourages their active engagement, and develops in them an understanding of their own activity as learners.

2 The social nature of learning

The learning environment is founded on the social nature of learning and actively encourages well-organised cooperative learning.

3 Emotions are integral to learning

The learning professionals within the learning environment are highly attuned to the learners' motivations and the key role of emotions in achievement.

7 Learning is building horizontal connections

The learning environment strongly promotes “horizontal connectedness” across areas of knowledge and subjects, as well as to the community and the wider world.

4 Recognizing individual differences

The learning environment is acutely sensitive to the individual differences among the learners in it, including their prior knowledge.

5 Stretching all students

The learning environment devises programmes that demand hard work and challenge from all but without excessive overload.

6 Assessment for learning

The learning environment operates with clarity of expectations using assessment strategies consistent with these expectations; there is a strong emphasis on formative feedback to support learning.